

Common Species on District Lands



Southwest Florida
Water Management District



CONSERVATION LANDS

The Southwest Florida Water Management District (District) manages water resources in the west-central portion of Florida according to legislative mandates. The District uses public land acquisition funds to protect key lands for water resources. The natural communities, plants and animals on these lands also benefit from a level of protection that can be experienced and enjoyed through recreational opportunities made available on District lands.

Every year, approximately 2.5 million people visit the more than 436,000 acres of public conservation lands acquired by the District and its partners. The lands are open to the public for activities such as hiking, bicycling, hunting, horseback riding, fishing, camping, picnicking and studying nature. The District provides these recreational opportunities so that residents may experience healthy natural communities. An array of natural landscapes is available from the meandering Outstanding Florida

Waters riverine systems, the cypress domes and strands, swamps and hammocks, to the scrub, sandhill, and pine flatwoods. The *Common Species on District Lands* brochure provides insight to what you may experience while recreating on public lands managed by the District.

Southwest Florida
Water Management District



CONSERVATION LANDS

A detailed oil painting of a fox, likely a red fox, looking out from behind a thick, textured tree trunk. The fox's fur is rendered with fine brushstrokes, showing shades of orange, brown, and white. The background is a soft, impressionistic landscape with green foliage and a hint of a sky. The overall style is classic and naturalistic.

Mammals

Southwest Florida
Water Management District

iStock



Virginia Opossum

Didelphis virginiana

Roger W Barbour - Smithsonian Institute



Brazilian Free-Tailed Bat

Tadarida brasiliensis

iStock



Nine-Banded Armadillo

Dasyus novemcinctus
(nonnative)

Ivy Creek



Eastern Cottontail

Sylvilagus floridanus

iStock



Marsh Rabbit

Sylvilagus palustris

iStock



Eastern Gray Squirrel

Sciurus carolinensis

Mary Barnwell - SWFWMD



**Sherman's
Fox Squirrel**
Sciurus niger shermani

RW Van Devender - Smithsonian Institute



Cotton Mouse
Peromyscus gossypinus

iStock



Coyote
Canis latrans
(nonnative)

iStock



Red Fox
Vulpes vulpes
(nonnative)

iStock



Gray Fox
Urocyon cinereoargenteus

iStock



Black Bear
Ursus americanus



iStock

Raccoon
Procyon lotor



iStock

River Otter
Lutra canadensis



iStock

Striped Skunk
Mephitis mephitis



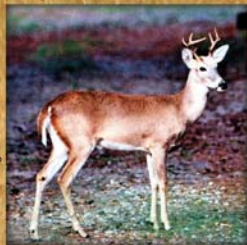
iStock

Bobcat
Lynx rufus



iStock

Feral Pig
Sus scrofa
(exotic, invasive)



Karen Gruenhagen - SWFWMD

**White-Tailed
Deer**
Odocoileus virginianus

Birds

Southwest Florida
Water Management District



Little Blue Heron
Egretta caerulea



Anhinga
Anhinga anhinga



Great Blue Heron
Ardea herodias



Great Egret
Ardea alba



Snowy Egret
Egretta thula



White Ibis
Eudocimus albus



iStock

Wood Duck
Aix sponsa



iStock

Bald Eagle
Haliaeetus leucocephalus



iStock

Red-Tailed Hawk
Buteo jamaicensis



Richard Gant - SWFWMD

Sandhill Crane
Grus canadensis



iStock

Wild Turkey ♂
Meleagris gallopavo male



iStock

Pileated Woodpecker
Dryocopus pileatus



iStock

Blue Jay
Cyanocitta cristata



Mike Hancock - SWFWMD

Florida Scrub-Jay
Aphelocoma coerulescens



iStock

Eastern Bluebird
Sialia sialis



iStock

Northern Cardinal
Cardinalis cardinalis 
male




iStock

Northern Cardinal 
female
Cardinalis cardinalis



Mike Hancock - SWFWMD

Barred Owl
Strix varia



Trees & Shrubs

Southwest Florida
Water Management District

main photo: iStock
inset photo: David MacManus



Slash Pine
Pinus elliottii

main photo: Shirley Denton
inset photo: David MacManus



Longleaf Pine
Pinus palustris

Dennis Girard



Bald Cypress
Taxodium distichum

Shirley Denton



Saw Palmetto
Serenoa repens

Allen Boatman



Dahoon Holly
Ilex cassine

Shirley Denton



Laurel Oak
Quercus laurifolia

Shirley Denton



Water Oak
Quercus nigra

Dennis Woodland



Sweetgum
Liquidambar styraciflua

Shirley Denton



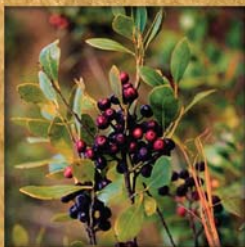
Sparkleberry
Vaccinium arboreum

main photo: Bill Eggers
inset photo: Caitlin Elam



Loblolly Bay
Gordonia lasianthus

Betty Wargo



Gallberry
Ilex glabra

Shirley Denton



Reticulate Pawpaw
Asimina reticulata

Guy Anglin



Pond Cypress
Taxodium ascendens

main photo: Allen Boatman
inset photo: Caitlin Elam



American Beautyberry
Callicarpa americana

Bob Bierman



Sea Myrtle
Baccharis halimifolia

Caitlin Elam



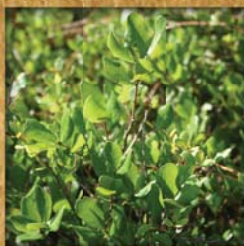
Fetter Bush
Lyonia lucida

Linda Cooper



Common Buttonbush
Cephalanthus occidentalis

Caitlin Elam



Myrtle Oak
Quercus myrtifolia

Butterflies



Southwest Florida
Water Management District



iStock

Cloudless Sulphur
Phoebis sennae



Linda Cooper

Zebra Swallowtail
Eurytides marcellus



Kathy C. Malone

Black Swallowtail
Papilio polyxenes



Kathy C. Malone

Eastern Tiger Swallowtail
Papilio glaucus



Linda Cooper

Giant Swallowtail
Papilio cresphontes



Kathy C. Malone

Sleepy Orange
Abais nicippe

Linda Cooper



Monarch
Danaus plexippus

Kathy C. Malone



Gulf Fritillary
Agraulis vanillae

Kathy C. Malone



Common Buckeye
Junonia coenia

Alana Edwards



American Lady
Vanessa virginiensis

Kathy C. Malone



Viceroy
Limenitis archippus

Linda Cooper



Checkered White
Pontia protodice

Linda Cooper



Great Southern White

Ascia monuste

Kathy C. Malone



Ceraunus Blue

Hemiargus ceraunus

Alana Edwards



Zebra Heliconian

Heliconius charithonia

Linda Cooper



Queen

Danaus gilippus

Linda Cooper



Question Mark

Polygonia interrogationis

Linda Cooper



Hackberry Emperor

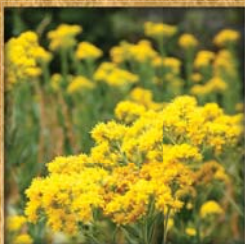
Asterocampa celtis



Wildflowers

Southwest Florida
Water Management District

Kathy C. Malone



Goldenrod
Solidago sp.

Linda Cooper



Pine Lily
Lilium catesbaei

Michael Drummond



Carolina Jasmine
Gelsemium sempervirens

Shirley Denton



Deer Tongue
Carphephorus paniculatus

Glenn Fleming



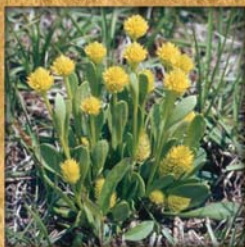
Blue Flag
Iris hexagona

Caitlin Elam



Pale Meadow Beauty
Rhexia mariana

Glenn Fleming



Candy Root
Polygala nana

Shirley Denton



Pink Sundew
Drosera capillaris

Linda Cooper



Climbing Aster
Aster carolinianus

Caitlin Elam



**Four Petal
St. John's Wort**
Hypericum tetrapetalum

Linda Cooper



**American
White Waterlily**
Nymphaea odorata

Roger Hammer



Pickerelweed
Pontederia cordata

Caitlin Elam



Sabatia
Sabatia grandiflora

Brenda Herring



Lobelia
Lobelia sp.

Caitlin Elam



Fungus

Caitlin Elam



**Atlantic
St. John's Wort**
Hypericum tenuifolium

Linda Cooper



Blazing Star
Liatris tenuifolia

Caitlin Elam



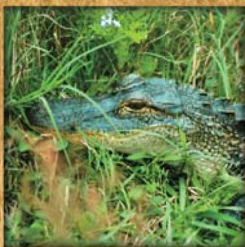
Florida Air Plant
Tillandsia simulata



Reptiles

Southwest Florida
Water Management District

Richard Gant - SWFWMD



American Alligator
Alligator mississippiensis

Steve Johnson - UF



Eastern Fence Lizard
Sceloporus undulatus

iStock



Green Anole
Anolis carolinensis

Steve Johnson - UF



Brown Anole
Anolis sagrei
(nonnative, invasive)

Steve Johnson - UF



Ground Skink
Scincella lateralis

Steve Johnson - UF



Common Garter Snake
Thamnophis sirtalis

Steve Johnson - UF



**Eastern Racer
(Black Racer)**
Coluber constrictor

Mary Barnwell - SWFWMD



Red Rat Snake
Elaphe guttata guttata

Steve Johnson - UF



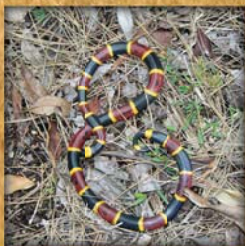
Eastern Ratsnake
*Pantherophis
alleganiensis*

John B. Jensen



**Eastern Ribbon
Snake**
Thamnophis sauritus

Steve Johnson - UF



**Eastern Coral
Snake**
Micrurus fulvius
(venomous)

Henry Mushinsky



**Cottonmouth
Water Moccasin**
Agkistrodon piscivorus
(venomous)

Richard Gant - SWFWMD



**Eastern
Diamondback
Rattlesnake**
Crotalus adamanteus
(venomous)

Richard Gant - SWFWMD



**Dusky Pygmy
Rattlesnake**
Sistrurus miliarius
(venomous)

John Jensen



Chicken Turtle
Deirochelys reticularia

Richard Gant - SWFWMD



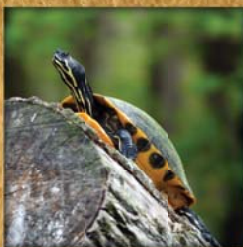
Gopher Tortoise
Gopherus polyphemus

Mary Barmwell - SWFWMD



**Florida
Box Turtle**
Terrapene carolina bauri

Richard Gant - SWFWMD



Peninsula Cooter
Pseudemys peninsularis

For additional information on District lands, order or download our *Recreation Guide to Southwest Florida Water Management District Lands* at WaterMatters.org/recreation/. The property descriptions included in the recreation guide provide basic information about each property, such as location, access and parking, hours of operation, restroom and water availability, recreational opportunities and contact numbers. You can also contact the District at (352) 796-7211, ext. 4470, or via email at Recreation@WaterMatters.org.

All plants and animals on District lands are protected. Removing, destroying or harassing animals or plants from or on District lands is prohibited except for specifically authorized research efforts, hunting and fishing activities authorized by permit or Special Use Authorization, or District-initiated removals associated with reforestation, control of exotic or nuisance species, silvicultural timber harvests or other land management activities. Additional state and/or federal regulations may also apply.

Southwest Florida *Water Management District*



CONSERVATION LANDS

COMAY 4-17

The Southwest Florida Water Management District (District) does not discriminate on the basis of disability. This nondiscrimination policy involves every aspect of the District's functions, including access to and participation in the District's programs and activities. Anyone requiring reasonable accommodation as provided for in the Americans with Disabilities Act should contact the District's Human Resources Office Chief, 2379 Broad St., Brooksville, FL 34604-6899; telephone (352) 796-7211 or 1-800-423-1476 (FL only), ext. 4703; or email ADACoordinator@WaterMatters.org. If you are hearing or speech impaired, please contact the agency using the Florida Relay Service, 1-800-955-8771 (TDD) or 1-800-955-8770 (Voice).